



Health & Safety Policy:

- Health, Safety, Environment & Communities Policy, Risk-Benefit Evaluation
 - Scenario Based Training
- Policy Number: DPTrainingUK-P8a-HSEC-RBE-SBT-V7
- Policy Date: 25/02/2026
- Review Date: 02/2027



1. Scope

- 1.1. This Health, Safety, Environment and Communities Policy outlines the procedures for all training programmes and business activities overseen by **Different Perspective Training Ltd. (DPTrainingUK)** specifically regarding:
 - 1.1.1. **Activities:** The delivery of Training and Consultation in First Aid, Mental Health, Outdoor and Off-Site Safety, and Water Safety.
 - 1.1.2. **People:** All DPTrainingUK staff, trainers, course delegates, and any members of the public or site staff who interact with the training group or equipment.
 - 1.1.3. **Locations:** All training sites, including bespoke client premises and public venues.

2. Introduction

- 2.1. This document is an evaluation of the foreseeable risks that are outside the experiences and risks met through “normal daily life”.
- 2.2. This document aims to outline the benefits that exposure to these risks will bring, through participation in Scenario Based Training activities and recommend control measures for these foreseeable risks.
- 2.3. DPTrainingUK staff will follow and work within the context of this Risk-Benefit Evaluation. Our trainers will also constantly and dynamically monitor these risks, and where necessary, alter plans as appropriate for the safety of the group.
- 2.4. Each venue and course will have their own hazards, and these will be assessed on the day using the Site-Specific Risk Assessment Proforma document, DPTrainingUK-P8c-HSEC-SSRA.
- 2.5. DPTrainingUK will provide supporting rationale if a decision is made by the trainer to not deliver training on health and safety grounds.
- 2.6. DPTrainingUK will require supporting rationale if a decision is made by a client to not deliver training on health and safety grounds.
- 2.7. This document is designed to summarise issues for the DPTrainingUK trainer delivering Scenario Based Training programmes, including, but not limited to the delivery of; First Aid, Mental Health First Aid, Off Site Safety Management, Aquatic Safety Qualification and other Scenario Based Training Programmes that include elements of these aforementioned training programmes and workshops.
- 2.8. It is assumed that all people engaging with these activities, including participants, passers-by, and members of the public not associated with DPTrainingUK, will be susceptible to the risks listed within this document.
- 2.9. All DPTrainingUK staff delivering qualifications will have undergone appropriate training and hold relevant qualifications for delivering DPTrainingUK programmes which will be maintained and kept relevant through undergoing personal CPD. Please refer to Staff Charter (DPTrainingUK-P2-SC) for further information regarding the DPTrainingUK Trainer Selection Process.

3. Risk-Benefit Evaluation

- 3.1. Risk-Benefit Evaluation for delivering **Different Perspective Training Ltd.** Scenario Based Training Programmes.

Significant Hazards	Control measures	Benefit
Communication to and Access for Emergency Services	DPTrainingUK staff will ensure that they check in at expected times and maintain communication with DPT Office and when working remotely or in areas of poor signal an increased communication plan is put in place. Verify access with client during initial programme planning and trainer to ensure free & easy access on day.	To ensure communication and access should the need arise to instil confidence whilst working remotely.
Site suitability for planned activities	Discuss venue criteria with client during initial programme planning including location and access for group. DPTrainingUK staff to carry out a thorough site inspection before each session.	Enable successful delivery of programme and ensure all Learning Objectives are met
Toilets and hand-washing facilities	Hygiene and comfort are essential for participant wellbeing and preventing site contamination.	Ensure site cleanliness is maintained and reduce case of illness or D&V
Trees, branches, roots and rocky, uneven or broken ground	DPTrainingUK staff to inspect site, identify and warn participants of risks and potential risks, including where identified deadfall.	Outdoor based scenarios are essential part of embedding learning through practice.



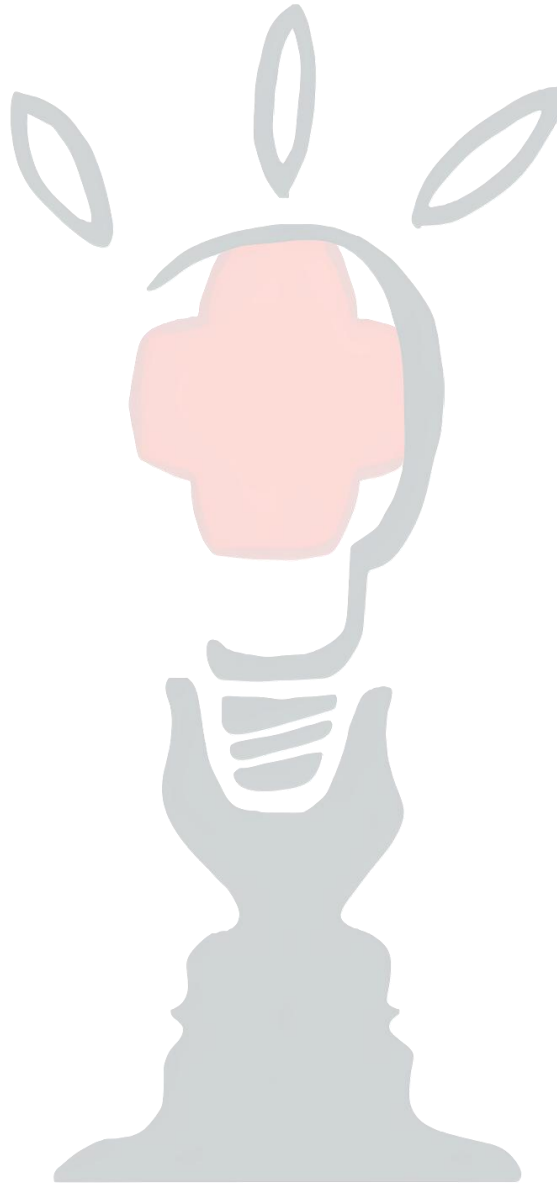
	<p>Ensure that all participants are aware of the need to tread sensibly and cautiously.</p> <p>Participants to be briefed on carrying loads and moving around safely during scenarios especially when carrying equipment/ each other.</p> <p>Ensure that all participants are aware of the need to look all around them as they move through the site.</p>	<p>Promoting emotional, mental and physical development through nurturing a knowledge of movement through different environments and the outdoors, the need to concentrate on and engage with their surroundings, be self-aware and support each other.</p> <p>Developing participants own sense of Risk Empowerment and the ability and responsibility to assess risks themselves.</p>
Bodies of Water, Rivers, Sea, Still Water	<p>Dangers of working around water to be highlighted and discussed with participants.</p> <p>Footwear advised before any participant accesses the water.</p> <p>All participants in or near the water to be closely monitored.</p> <p>Appropriate rescue equipment to be on hand at all times participants are in water.</p> <p>A suitably dry sheltered area (where practicable) will be available for all participants upon exiting water.</p> <p>All participants that have been into water are to be monitored and are to get into dry clothing as soon as is practicable upon exiting the water for temperature related illness, cold water after-drop and issues associated with water ingestion.</p>	<p>Outdoor based scenarios are essential part of embedding learning through practice.</p> <p>Water is a hazard that many of the participants will encounter in their daily environment and therefore an essential part of training.</p> <p>Developing participants own sense of Risk Empowerment and the ability and responsibility to assess risks themselves.</p>
Traffic, cars and members of the public	<p>Where appropriate cordon off area and identify that there is a training scenario underway.</p>	<p>An understanding of the need to think of the wider picture and not just those wrapped up in the scene/ situation.</p>
Illness, injury and cross infection	<p>All DPTrainingUK staff are fully trained to, or beyond, the appropriate recommended level for each programme delivered, keeping up to date with best practice and changes in the industry through CPD.</p> <p>All DPTrainingUK staff will have access to an appropriate first aid kit suitable to the environment and location in which they are working.</p> <p>All DPTrainingUK staff to ensure equipment is maintained, safe to use and cleaned appropriately according to manufacturer’s guidelines, industry standards of normal practice and Directors Discretion.</p> <p>Where appropriate, anti-bacterial gel, wipes and gloves to be used to prevent cross infection during training sessions involving exposure to participants bodily fluids e.g. CPR on First Aid courses.</p>	<p>Being able to deal with first aid situations as they arise is essential and enables the safe delivery of DPTrainingUK programmes in remote and exciting locations.</p> <p>Exposure to potential risks in a controlled environment, engenders a greater understanding of hygiene, own protection and personal safety.</p>
Weather related issues	<p>DPTrainingUK staff are to check weather forecast and ensure that participants are suitably dressed for conditions, with appropriate cold and wet weather and clothing, when cold and sun-cream, sunhat and water when hot.</p> <p>Staff to ensure that there is a suitable location for the participants to get dry and stay warm, or keep cool and sheltered from the sun, should the weather demand a cessation of activities.</p> <p>Staff to carry a group shelter suitable for all participants.</p> <p>Staff to monitor wellbeing of participants to prevent the onset of hypothermia or hyperthermia.</p>	<p>Enable successful delivery of programme and ensure all Learning Objectives are met and to ensure the wellbeing of participants.</p> <p>Participants will learn how to suitably prepare for all conditions and understand how broad an impact environmental conditions can have.</p>
Bite, stings, rashes, scratches, reactions and poisoning	<p>Warn participants of contact with certain animals, plants and fungi, identifying anything identified on site of particular concern.</p> <p>If working in an area prone to Lyme Disease, ensure that participants are briefed on this, on how to spot signs and symptoms of this and that they know to seek further medical care should they display any of these signs and symptoms.</p> <p>Ensure that the participants are briefed to not put their fingers, or anything they find in their mouths.</p> <p>Where reasonable choose location that avoids poisonous plants and wildlife, clearing a suitable area where appropriate and as necessary.</p> <p>Candidates are to wear gloves and long trousers and closed footwear when appropriate, during scenarios.</p> <p>Make sure that there is access to suitable hand-washing facilities, antibacterial hand gel and repellent.</p>	<p>Encourage a positive approach to wildlife and the natural environment, rather than being frightened of it.</p> <p>Promoting a knowledge of movement through different environments and the outdoors, the need to concentrate on and engage with their surroundings, be self-aware and support each other.</p> <p>Developing participants own sense of Risk Empowerment and the ability and responsibility to assess risks themselves.</p>
Allergies, existing medical conditions and exacerbation of injuries	<p>Ensure all DPTrainingUK staff are fully briefed of medical needs of, treatment for, and location of medicines for all participants.</p> <p>DPTrainingUK staff are to ask at the start of the course for participants to let them know whether there are any pre-existing injuries, complaints or medical conditions, that were not mentioned at time of booking, that might affect the complete engagement in this course.</p> <p>Ensure that latex free options are available, eg manikin faces.</p> <p>Ensure that there are seating and kneeling pads available for working directly on the ground.</p> <p>Ensure that proper and appropriate lifting and rolling techniques are used.</p>	<p>Promote knowledge and independence in identifying and avoiding food allergens.</p> <p>Understanding of participants own strengths and weaknesses and opportunities for their own understanding and development of coping strategies.</p>
Lost or missing participants	<p>Ensure that all participants are aware of boundaries and the surrounding areas.</p> <p>Operate a buddy system to ensure that each person is looking out for and being looked after another participant, staff and students alike.</p> <p>Regular headcounts and ensure that all are present and listening during safety briefings.</p>	<p>Participants to realise the importance of caring for each other, not leaving group responsibilities solely to the leader, working as a team and following established boundaries. Building relationships, trust and rapport.</p>
Inappropriate or unsafe behaviour that	<p>All candidates are committed to the programme in which they are engaged and understand the implications of intolerable or dangerous behaviour.</p>	<p>Each programme is specifically tailored to provide the best opportunities for the participants to meet the Learning Outcomes.</p>



endangers other participants	Behavioural expectations are to be outlined at the start of each session	Promote the importance of working together for the betterment of the whole group rather than individual goals and desires.
------------------------------	--	--

4. Continual Review

- 4.1. This is a dynamic document subject to constant update by DPTrainingUK.
- 4.2. Whenever a trainer discovers or is made aware of a new hazard, this should be forwarded to DPTrainingUK.
- 4.3. This policy will be reviewed annually for each qualification however if any urgent issues arise it will be updated as required.
- 4.4. Relevant training and updates will be offered to trainers and staff consistent with DPTrainingUK quality assurance procedures.



Different Perspective Training Ltd.
Registered Company Office: The Old Barn,
 Eddington Hill, Hungerford, Berkshire, RG17 0HA UK
Website: www.DPTrainingUK.com

Registered Company #: 10843621
Director & Lead Facilitator: Mr Matthew ILOTT
Email: matt@DPTrainingUK.com
Contact: 01488 685497 | 07921 769868

